

Henry 2DW1 LWD RM 500TVD

ARC8A-AA id13_0c_02

Format: VISION Resistivity 2MHz 1:500

Vertical Scale: 1:500

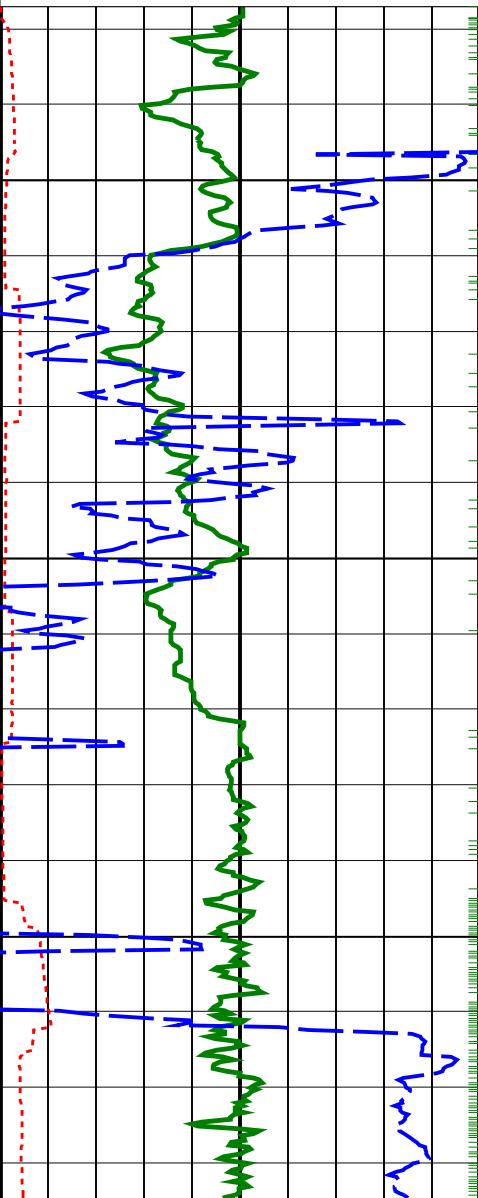
Graphics File Created: 19-Sep-2008 14:32

PIP SUMMARY

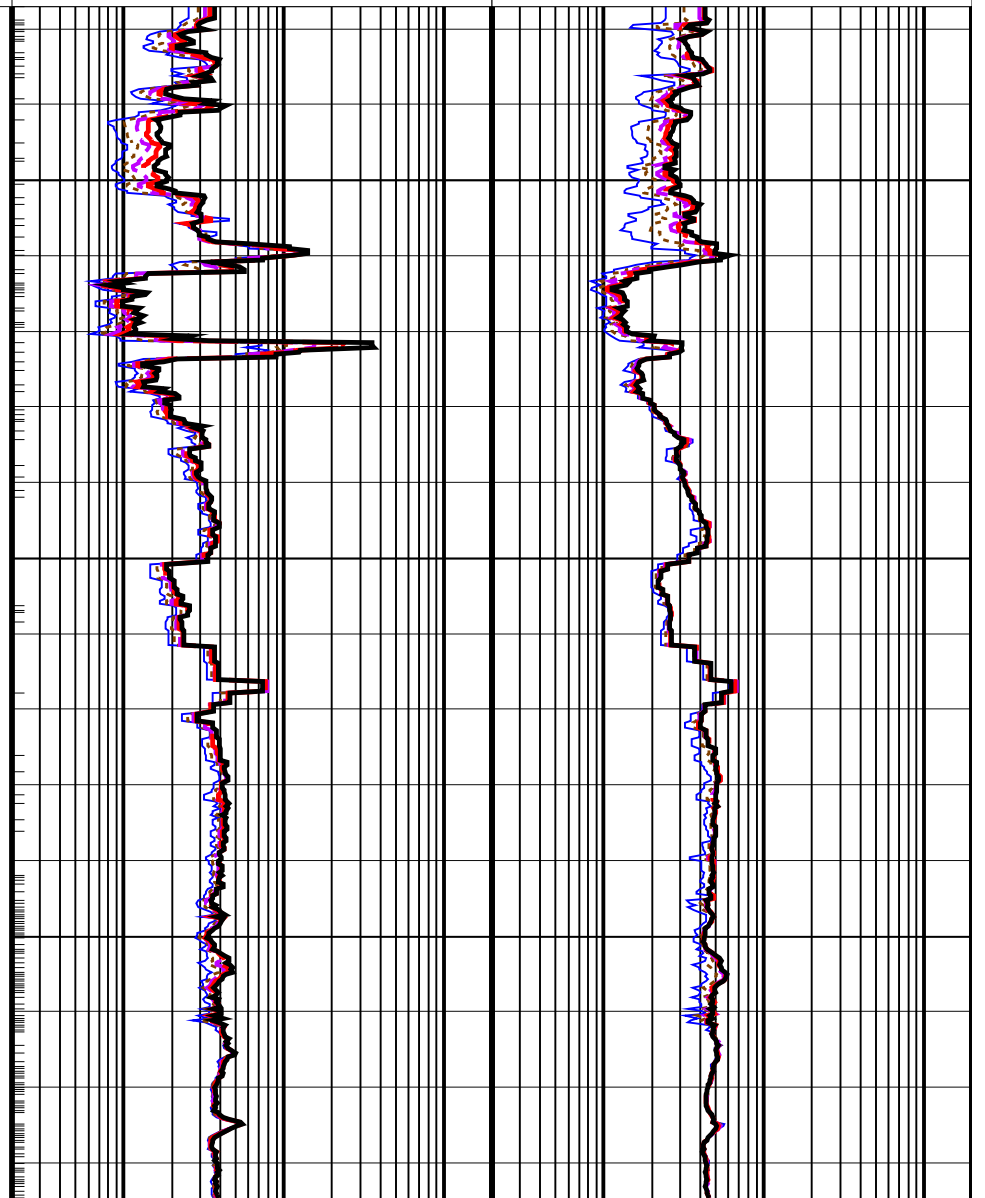
- ├ ARC Gamma Ray Samples
- └ ARC Resistivity Samples

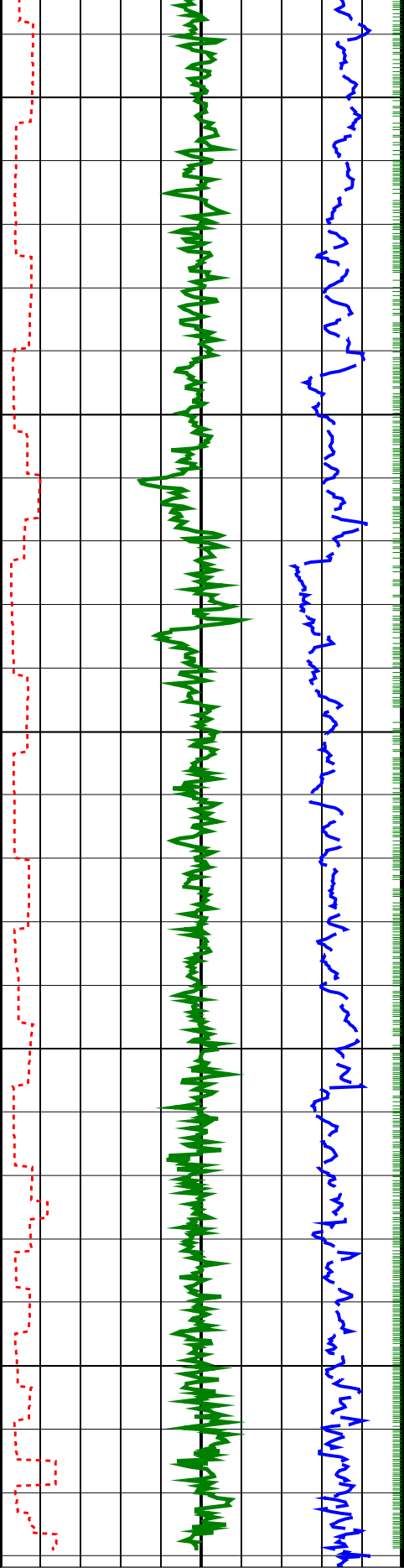
	ARC Phase-Shift Resistivity 40-in. at 2 MHz (P40H) 0.2 (OHMM) 200	ARC Attenuation Resistivity 40-in. at 2 MHz (A40H) 0.2 (OHMM) 200
	ARC Phase-Shift Resistivity 34-in. at 2 MHz (P34H) 0.2 (OHMM) 200	ARC Attenuation Resistivity 34-in. at 2 MHz (A34H) 0.2 (OHMM) 200
	ARC Phase-Shift Resistivity 28-in. at 2 MHz (P28H) 0.2 (OHMM) 200	ARC Attenuation Resistivity 28-in. at 2 MHz (A28H) 0.2 (OHMM) 200
	ARC Phase-Shift Resistivity 22-in. at 2 MHz (P22H) 0.2 (OHMM) 200	ARC Attenuation Resistivity 22-in. at 2 MHz (A22H) 0.2 (OHMM) 200
	ARC Phase-Shift Resistivity 16-in. at 2 MHz (P16H) 0.2 (OHMM) 200	ARC Attenuation Resistivity 16-in. at 2 MHz (A16H) 0.2 (OHMM) 200

Rate of Penetration, Averaged over Last 5ft (ROP5_RM) 200 (M/HR) 0
ARC Resistivity Time After Bit (TAB_ARC_RES) 0 (HR) 10
ARC Gamma Ray (GR_ARC) 0 (GAPI) 200



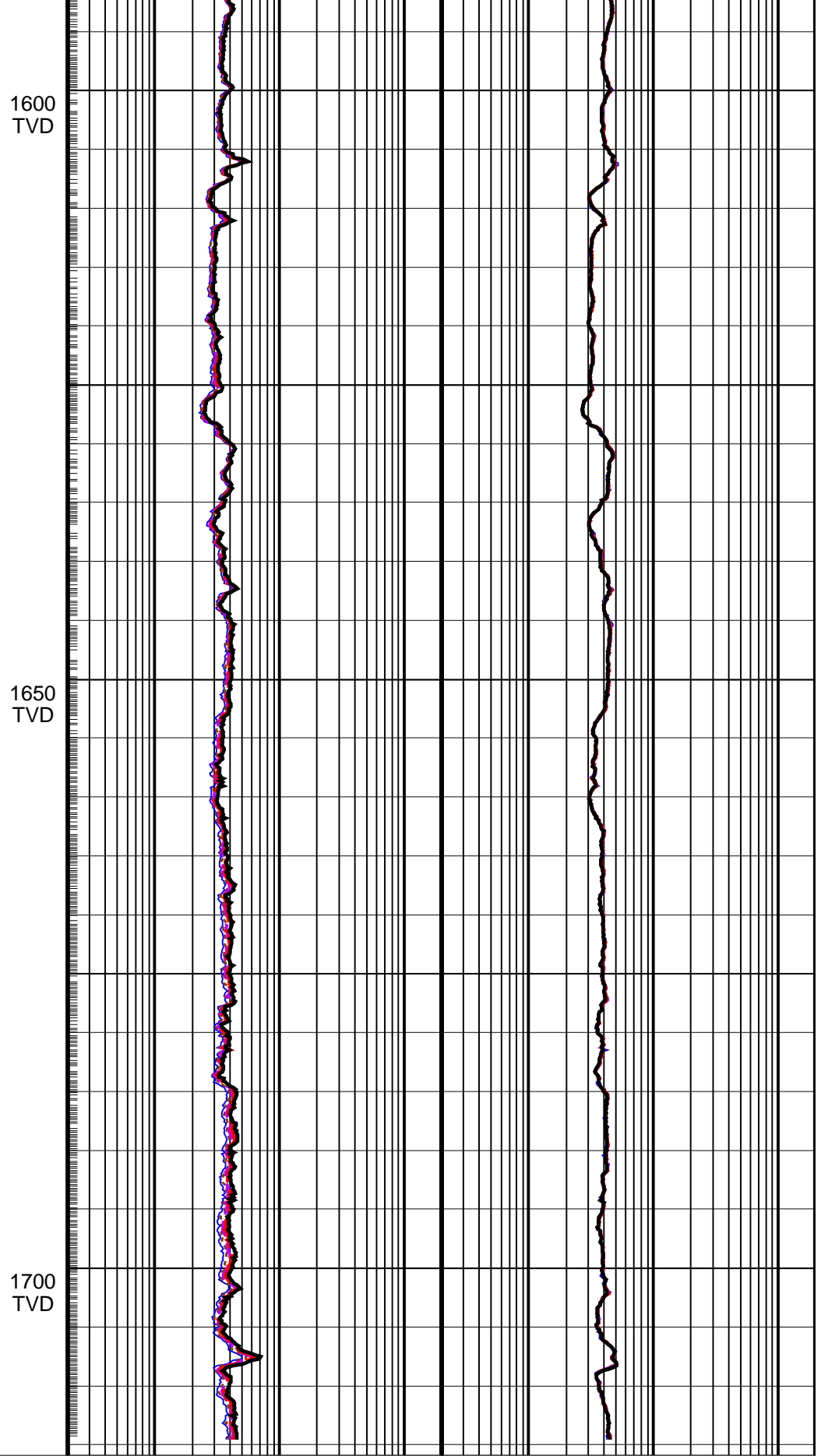
1550
TVD





ARC Gamma Ray (GR_ARC)
0 (GAPI) 200

ARC Resistivity Time After Bit (TAB_ARC_RES)
0 (HR) 10



ARC Phase-Shift Resistivity 16-in. at 2 MHz (P16H)
0.2 (OHMM) 200

ARC Attenuation Resistivity 16-in. at 2 MHz (A16H)
0.2 (OHMM) 200

ARC Phase-Shift Resistivity 22-in. at 2 MHz (P22H)
0.2 (OHMM) 200

ARC Attenuation Resistivity 22-in. at 2 MHz (A22H)
0.2 (OHMM) 200

Rate of Penetration, Averaged over Last
5ft (ROP5_RM)
 200 (M/HR) 0

ARC Phase-Shift Resistivity 28-in. at 2
MHz (P28H)
 0.2 (OHMM) 200

ARC Phase-Shift Resistivity 34-in. at 2
MHz (P34H)
 0.2 (OHMM) 200

ARC Phase-Shift Resistivity 40-in. at 2
MHz (P40H)
 0.2 (OHMM) 200

ARC Attenuation Resistivity 28-in. at 2
MHz (A28H)
 0.2 (OHMM) 200

ARC Attenuation Resistivity 34-in. at 2
MHz (A34H)
 0.2 (OHMM) 200

ARC Attenuation Resistivity 40-in. at 2
MHz (A40H)
 0.2 (OHMM) 200

PIP SUMMARY

- + ARC Gamma Ray Samples
- + ARC Resistivity Samples

IDEAL Version: ID13_0C_11
 IDF

ARC8A-AA id13_0c_02